

	<b>PI NICOLAE TESTEMITANU STATE UNIVERSITY OF MEDICINE AND PHARMACY OF THE REPUBLIC OF MOLDOVA</b>	Pag. <b>1/19</b>
---	--	------------------

*Translation from Romanian into English*

APPROVED

at the meeting of the Senate of  
*Nicolae Testemitanu* University minutes  
no. 1/ 14 of 23.01.2026

## REGULATION

### on the development and defense of the bachelor/ graduation thesis at *Nicolae Testemitanu* State University of Medicine and Pharmacy of the Republic of Moldova

#### I. GENERAL PRVISIONS

1.1. This Regulation establishes the main rules regarding the development, structure, graphic design and defense of the bachelor/graduation thesis at *Nicolae Testemitanu* State University of Medicine and Pharmacy (hereinafter "University") and is developed on the basis of the following provisions:

- Education Code no.152 of July 17, 2014, with further amendments.
- Government Decision No. 412 of 12.06.2024 on the approval of the Nomenclature of fields of study and specialties in higher education.
- Regulation on the organization of licentiate (cycle I) and integrated studies, approved by the MECR Order RM no. 1625 of 12.12.2019.
- The Framework Regulation on the organization of the final exam for higher education, approved by Order of the Minister of Education and Research No. 1175 of 19.09.2023.
- The framework plan for bachelor's, master's, and integrated studies, MER Order No. 510 of 7.04.2025;
- The Charter of *Nicolae Testemitanu* State University of Medicine and Pharmacy registered at the MHLSP on 29.01.2020.
- Regulation on the organization of bachelor (cycle I) and integrated (Bachelor and Master) studies at *Nicolae Testemitanu* State University of Medicine and Pharmacy of the Republic of Moldova approved at the Senate meeting, minutes no. 5/15 of 25.04.2024.
- Regulation on the organization and completion of the final evaluation of higher studies (licentiate and integrated) at *Nicolae Testemitanu* State University of Medicine and Pharmacy of the Republic of Moldova, approved by the Senate no. 1/13 of 23.01.2026.
- Anti-plagiarism regulation of the public institution *Nicolae Testemitanu* State University of Medicine and Pharmacy, approved at the Senate meeting, minutes no. 5/4 of 24.05.2022;

1.2. Bachelor's thesis/graduation paper is a component stage of the Licentiate Examination in licentiate higher education (cycle I) and of the Graduation Examination in integrated higher education (cycles I+ II).

1.3. The licentiate thesis/ graduation paper is an important component in the assessment of the graduate's knowledge and scientific activity it tests the skills to conceive and conduct independent

research as well as to draw up and present the results of the research according to the rules of the scientific community.

1.4. The development of the licentiate thesis is aimed at:

- development of the graduates' skills to conduct research and acquire the research methods in the specialty field;
- systematization and application of the theoretical knowledge in the specialty in the process of development of practical solutions, specific to the field of professional training or the realization of the case studies;
- appreciation of the graduate's capacities and the degree of training for individual post-graduate professional activity.

1.5. The dean's offices of the faculties will ensure the development of schedules regarding the verification of similarities (coincidences) of the bachelor's thesis/graduation paper. At the request of the dean's office, to verify the similarities, the department will present the Word version of the work one month before submission.

1.6. The Didactic and Academic Management Department together with the Dean's offices will evaluate the papers, in order to detect coincidences within a maximum of 15 calendar days from their submission and will generate reports on the degree of similarities.

1.7. Bachelor's and graduation theses that have been subjected to anti-plagiarism verification and for which the similarity coefficient 1 ( $CS1 \leq 10\%$ ) and the similarity coefficient 2 ( $CS2 \leq 5\%$ ) are considered eligible for defense in the current academic year, within the deadlines set by the academic calendar. Papers for which  $CS1 > 10\%$  and/or  $CS2 > 5\%$  have been found shall be submitted for review by the anti-plagiarism committee.

1.8. Anti-plagiarism committees are established by order of the responsible dean's office and shall be composed in accordance with the principle of representativeness; each committee shall include, as a mandatory requirement, persons appointed from among graduate students.

1.9. The anti-plagiarism committee verifies and assesses the nature and extent of the reported coincidences, in accordance with the criteria set out in Article 14 of the Internal Anti-Plagiarism Regulations. If the Committee finds that  $CS1$  exceeds the permissible limit, it may order the return of the paper to the student for correction, with a view to eliminating the elements identified as similar, the deadline for correction being a maximum of 10 (ten) working days from the date of communication of the decision.

1.10. After correction, the returned papers will be subjected to a new anti-plagiarism check. Bachelor's and graduation theses which, after repeated verification, show  $CS1 \leq 10\%$  and  $CS2 \leq 5\%$  will be admitted to the preliminary defense, in accordance with the deadlines in the University Calendar.

1.11. Student whose work, after repeated verification, maintains  $CS1 > 10\%$  and/or  $CS2 > 5\%$ , as well as students who do not comply with the deadlines set out in the University Calendar for correcting or submitting their work, will not be admitted to the preliminary defense of their bachelor's/graduation thesis in the current academic year and will be expelled for academic failure,

in accordance with the applicable regulations.

1.12. Students who were not admitted to the preliminary defense due to plagiarism in their bachelor's/graduation thesis will be reinstated, provided that they repeat all activities related to the approval of the bachelor's/graduation thesis, and a new topic will be chosen for its preparation.

1.13. The responsibility for the technical quality of the paper and its originality rests with the author of the paper and the supervisor of the licentiate thesis/graduation paper.

## **II. CHOOSING OF THE THEME AND THE SCIENTIFIC ADVISOR**

2.1. The theme of the licentiate thesis/ graduation paper is proposed by the departments/ teaching chairs and placed in the Didactic Module of the University Information Management System (further - SIMU).

2.2. The dean's offices will approve the themes of the theses proposed by the departments/ chairs for each study program, after which they become accessible to the students in SIMU.

2.3. From the list proposed by chairs in SIMU, the students select the theme of the license thesis, usually, by the end of semester VIII of studies for the programs of integrated higher studies lasting 6 years, semester VII – for the programs of integrated higher studies with the duration for 5 years; VI semester – for the higher education programs.

2.4. In order to coordinate the development of the licentiate thesis/ graduation paper, the departments/ chairs confirm a thesis advisor. University professors, associate professors, lecturers or university assistants with a scientific degree of the departments/ chairs may be appointed as scientific advisors.

2.5. The themes for the licentiate thesis/ graduation paper can be edited and modified with the approval of the scientific advisor of the thesis, being approved by the head of chair.

2.6. The student can change the theme and/ or the scientific advisor only once, after informing and with the approval of the initial scientific advisor and the Faculty Dean's office. Changing the theme and the scientific advisor is no longer possible starting with the autumn semester of the last year of study.

2.7. A scientific advisor may coordinate a maximum of 5 licentiate theses/ graduation papers (cumulative in all study programs) for one academic year. The Dean's Office will coordinate the number of licentiate theses/ graduation papers made within the chair according to the number of students at the faculty and of the teaching staff at the department/ chair.

## **III. STRUCTURE AND PRINCIPLES OF THE LICENTiate THESIS DEVELOPMENT**

3.1. The licentiate thesis/ graduation paper must demonstrate the student's ability to work with literature relevant to the subject. The thesis should be developed correctly from the point of view of methodology, data analysis and argumentation, have a logical structure, be written in scientific language. The aspect must be in accordance with academic standards and comply with the scientific

writing recommendations (structure, wording, bibliography) provided in Section IV of this Regulation.

3.2. The licentiate thesis/ graduation paper can be carried out in the form of:

- **original research** work (descriptive study, analytical study, clinical, pre-clinic experimental, clinical case study, case series, etc.)
- **literature synthesis** work.

3.3. Licentiate theses/ graduation papers are developed and written in Romanian or in the language of the student's studies.

3.4. The structure of the diploma thesis comprises the following sections:

- **Title page;**
- **Declaration of responsibility**, signed by the author;
- **Contents;**
- **List of Abbreviations;**
- **Introduction;**
- **The content of the licentiate thesis/ graduation paper** as follows:
  - a. Original research licentiate thesis/ graduation paper:*
    - ✓ Chapter I. The bibliographic analysis of the theme;
    - ✓ Chapter II. Material and methods of research;
    - ✓ Chapter III. Own results and discussions;
    - ✓ General conclusions;
    - ✓ Bibliography
    - ✓ Annexes (if required);
  - b. specialized literature synthesis licentiate thesis/ graduation paper:*
    - ✓ Methodology for selecting bibliographic sources (databases, period, keywords; inclusion and exclusion criteria, etc.);
    - ✓ The main part, consisting of 1-2 chapters
    - ✓ Discussions;
    - ✓ General conclusions;
    - ✓ Bibliography.
    - ✓ Annexes (if required);

3.4.1. **Title page** – is done in accordance with Annex 1.

3.4.2. **Declaration of responsibility** – is written in accordance with Annex 2 and is placed after the title page.

3.4.3. **Contents** – it is recommended to be placed at the beginning of the licentiate thesis/ graduation paper, after the Declaration, where the names of the chapters, the subchapters, the other parts of the licentiate thesis/ graduation paper and the corresponding pages are written.

3.4.4. **List of Abbreviations** (as the case) – the international abbreviations, unanimously accepted in the field of the theme of the bachelor/ graduation thesis, are used.

3.4.5. **Introduction**, where the following are recorded:

- a. *the actuality of the problem*;
- b. *purpose and objectives of the research*;
- c. *the practical importance of the work (as the case)*.

The volume of the introduction should not exceed 2-3 pages.

3.4.6. For the **original** research licentiate theses/ graduation papers:

- ✓ Chapter I. „**The bibliographic analysis of the theme**”. It will carry out a critical evaluation of the relevant literature for the research theme, will have a concrete name, reflecting the theme of the research. The section will contain analysis of different bibliographic sources on the thesis: scientific articles, monographs, manuals, guides, clinical protocols, etc. published in the country and abroad. The main theories, explanatory templates, showing the development and progress of recent research, and possible gaps or limitations, will be presented. The chapter will be structured on subchapters, which will correspond to the research objectives. The chapter will present the theoretical framework of the studied problem and will not exceed 30-35% of the number of pages of the theses. The priority (60%) will be given to the literature of the last ten years.
- ✓ Chapter II „**Material and methods of research**” (if necessary, will be structured in subchapters) will include the general characteristic of the study - the type of study, the design of the research, the material studied; research methods, etc. and the methodology of mathematical and statistical analysis of the obtained results. The volume of this compartment will not exceed 3-6 pages and should answer the following questions:
  - what was the study material (if applicable, name, group, series, producer, country);
  - sampling mode (if applicable);
  - type of study chosen, according to research
  - reagents and standards used (if applicable) – chemical name, quality, concentration, manufacturer, country of origin;
  - the equipment used (type, model, producer, country of origin);
  - parameters assessed, choosing criteria and assessment methods;
  - what was the way to obtain the reagent solutions, stock, working;
  - what were the working conditions, including the way of preparing the sample for analysis (if applicable);
  - the statistical methods used and the substantiation of their use.

The information must be sufficiently precise for a reader to reproduce and verify the reported work.

- ✓ In Chapter III „**Own results and Discussions**” the results, which will be in accordance with the design and the research methods used, will be presented. In this part of the licentiate thesis/ graduation paper the tables and figures, which will present the results of the research and the discussion of these, clinical cases, which will show the statistical processing of the data and the own opinion of the research, will be included. Interpretation of own data will be done by reference to data from the literature, indicating

similarities and differences.

3.4.7. For *specialized* literature synthesis licentiate theses/ graduation papers:

- ✓ The **main part** can consist of 1-2 chapters, which will contain:
  - description of the relevance of the research topic, the situation in the field and the controversies registered;
  - presentation of the types of studies carried out in the field (for example: descriptive or analytical. Analytical: observational (case-control and cohort) and experimental (SCR, diagnostic studies and community studies, etc.) and the techniques used without a detailed description of the experimental procedure and how they are applied;
  - description of the most important results, published in recent scientific articles;
  - dynamic development and scientific progress in approaching the proposed topic for research;
  - finding certain thematic aspects, being highlighted various opinions and conclusions of the authors;
  - use of figures and/ or tables (with source indication), to support the synthesis of results, made by the author of the publication or to present the most relevant results taken directly from the scientific article.
- ✓ The **Discussion** section is described in a separate chapter, the purpose of which is to interpret the exposed narrative material, which will include:
  - interpretation, critical analysis and explanation of the literature review exposed in the *main part*;
  - mentioning and explaining the limits of the research (synthesis) performed on the topic of the licentiate thesis/ graduation paper based on the objectives set;
  - mentioning the aspects of the licentiate thesis/ graduation paper insufficiently addressed in the literature in the field in order to suggest future research directions;
  - the interpretations offered must logically lead to conclusions.

3.4.8. **Conclusions** will be briefly written out on points that will contain a summary of the results obtained consistent with the objectives in the *Introduction* and will reflect their opinions and personal contribution in studying and elucidating the problem addressed.

3.4.9. The **Bibliography** will contain bibliographic sources used in the paper, preferably (60%) from the last 10 years. It will be made up according to international requirements (Annex 3). The references will be presented in a numerical sequence according to the alphabetical order of the names of the first authors with the preservation of the unique numbering. References to bibliographic sources are indicated in square brackets, inserted into the text, for example - [8]. In the case of licentiate theses in the form of **narrative synthesis** of the literature, the minimum number of bibliographic sources will be 40.

3.4.10. In the **Annexes** various materials (survey questionnaire, investigations, schemes, photographs, case study, etc.) relevant to the study undertaken will be included. If some aspects of the research have been published or communicated within the scientific events, the appendices must include copies of the summaries or scientific articles from the original



documents and/or the copy of the respective page from the Congress/conference Program that confirms the presentation of the oral or poster report for scoring maximum, or proof of acceptance of the abstract or article for publication and not just proof of its submission.

#### **IV. RULES ON THE GRAPHIC ASPECT OF LICENTIATE THESES/ GRADUATION PAPERS**

4.1. The theses should be written on white paper, A4 sized, 210 x 297 mm, on one side of the paper.

4.2. The pages of the licentiate thesis/ graduation paper will have the following fields: left - 30 mm, up and down - 20 mm, on the right - 15 mm. All pages of the licentiate thesis/ graduation paper, except for the title sheet, will be numbered, the number placed in the center of the page, down. Repeating and absence of paging is not allowed.

4.3. The licentiate thesis/ graduation paper will be computerized, using the Times New Roman font – 12 pt, at 1.5 intervals and using the appropriate diacritical marks (ă, î, â, ș, ț). When capitalizing titles, capitalization and font 14 are allowed, as well as highlighting certain words with Bold or Italic.

4.4. Each section of the licentiate thesis/ graduation paper will start from the new page. The chapters will be capitalized, bold, centered, numbered with Arabic numerals (1; 2); the word "chapter" is not written. The subchapter titles are written in lower case and are numbered in Arabic numerals (1.1, 1.2, 2.1, etc.) The first line of each paragraph starts with a 1 cm paragraph. The text alignment option is on both edges (justified) (*Annex 4*).

4.5. Formulas, tables and figures are numbered consecutively without taking into account the chapter number, for example:

- ✓ figure 5 - in the explanatory text or Figure 5. - in the title of the figure, which is placed below the figure using the font Times New Roman Regular, Centered (*Annex 4*);
- ✓ table 7 - in the explanatory text and Table 7. - in the name of the table, placed above it, using Times New Roman, Regular, Centered (*Annex 4*);
- ✓ the formula is placed at the beginning of the line, and its number - at the end of the line (*Annex 4*);
- ✓ if necessary, mention the data source in the table/ figure under the title of the table/ figure aligned between the left and right margins, indicating the name of the author/ s, title of the work, publisher, year, page, or address of the online source (in the same way as the Bibliography is done);
- ✓ the units of measure and statistical significance must be reflected in the tables and figures
- ✓ If there are tables that contain notes, they will be written immediately after the table, not at the bottom of the page or in the body of the table.

4.6. In the licentiate thesis/ graduation paper it is allowed to abbreviate combinations of words, compound words, words commonly used in accordance with international abbreviations, unanimously accepted in the scientific community and provided that they do not create difficulties in reading the text and do not cause ambiguities.

4.7. Notes, corrections, letter outlines, erasures, spots, page additions, etc. are not allowed in the licentiate thesis/ graduation paper.

4.8. The main part of the thesis (excluding the Bibliography and Appendices) shall be at least 30 pages long.

## **V. DEFENSE AND ASSESSMENT OF THE BACHELOR/ GRADUATION THESIS**

5.1. Completion of the bachelor/ graduation thesis is subject to obtaining the agreement of the scientific advisor, and, as the case may be, the Anti-Plagiarism Commission, by admitting the student to the prior defense at the department/ chair/ discipline.

5.2. The bachelor/ graduation theses in its final form will be submitted to the department/ chair for prior defense at least one month before the deadline indicated for defense.

5.3. Prior defense will be made at the department/ chair/ discipline meeting, during which students will present the obtained results (Power Point).

5.4. The student is admitted to the public defense of the bachelor/ graduation thesis within the Assessment Board, if the license thesis/ graduation paper presented at the prior defense has been approved by the department/ chair/ discipline, fact confirmed by the extract from the minutes stating the student's name, the qualification "admitted".

5.5. The bachelor thesis will be covered after its approval at the meeting of the respective department/chair/ discipline and will be presented 10 days before the final defense to the Assessment Board, the composition of which will be approved by order of the rector.

5.6. The department/ chair/ discipline will present in the Dean's office all the licentiate theses/ graduation papers developed within the chair in electronic format the PDF version, which is kept in the Dean's archive.

5.7. The bachelor/ graduation thesis defense will be public and will be held in the open session of the Assessment Board at the chair/ department in which the student developed the bachelor thesis, in the presence of at least 2/3 of the number of members, in the form of a summary presentation of the thesis by the author, supported by Power Point presentation, for which he is granted up to 15 minutes.

5.8. If the theme of the licentiate thesis is interdisciplinary, the interdisciplinary Assessment Board will be created by the rector's order.

5.9. The chairman of the Assessment Board coordinates the defense of the bachelor/ graduation thesis, asks questions, gives grades, ensures the preparation of the minutes and is responsible for complying with the provisions of the Regulation.

5.10. The members of the Assessment Board ask questions, give grades and perform any other tasks established by the chairman, for the smooth running of the license theses defense.

5.11. The Secretary of the Board asks questions, gives grades and ensures his administrative activity: checking and preparing the classrooms for public defense, taking the theses, taking the assessment sheets of the commission (one per student) to the Dean's office, taking and verifying the



materials of presentation by the students of the licentiate theses/ graduation papers, as well as other attributions given to him by the Chairman of the Commission for the smooth running of the bachelor/ graduation theses defense. In the absence of the secretary, his/her duties shall be performed by one of the members of the Committee, appointed by the Chair of the Committee.

5.12. The bachelor thesis will be assessed by the Board according to the following criteria:

- ✓ the quality of writing the licentiate thesis/ graduation paper and observing the structuring rules;
- ✓ quality of the study/ research itself;
- ✓ bibliography quality;
- ✓ quality of oral presentation and answering of Board's questions;
- ✓ confirmation of research results publication (article, thesis, report, poster).

5.13. The decision on the grade for the licentiate thesis/ graduation paper defense will be taken at the closed assessment board meeting, according to the evaluation algorithm and using of assessment sheet (annex 5), based on the criteria for final assessment of the licentiate theses/ graduation papers (annex 6).

5.14. When the scientific advisor is a member of the assessment board, he will not take part in the thesis assessment.

5.15. The final grade of the presented licentiate thesis/ graduation paper will be calculated by the arithmetic average of the Assessment Sheets drawn up in accordance with the model in Annex 7 by the members of the Board, and the grade will be written in Arabic numerals and letters with two decimal places.

5.16. The results of the licentiate thesis/ graduation paper defense will be communicated to the students on the same day after the assessment board meeting.

5.17. The grade obtained by the candidate will be reflected in the minutes of the Assessment Board meeting, the student's record-book and the Supplement to the Diploma.

5.18. The absence without good reason on a licentiate thesis/ graduation paper defense or the obtaining of a grade less than "5" is qualified as a failure of the graduation/ licentiate examination.

5.19. Students have the right to appeal the Committee's decision. Appeals must be submitted in writing within one working day of the announcement of the bachelor's/graduation exam results to the secretary of the Assessment Committee. On the day of submission, they shall be forwarded to the secretary of the Bachelor's/Graduation Examination Committee and registered by the secretary of the Bachelor's/Graduation Examination Committee in the Register of Appeals.

5.20. Appeals will be examined by the Appeal's Board, approved by the rector's order during two working days after their submission. Appeals examination is registered in the separate minutes signed by the members of the Examination and Appeals Boards.

5.21. Appeals Board checks and assesses the presentation again (based on the on-line registration) and the licentiate thesis/ graduation paper. The changing of the appealed mark is done by raising or decreasing of it and remains conclusive.

5.22. If the licentiate thesis/ graduation paper has been assessed with a mark less than "5", the thesis can be defended next year at the next session of the graduation/ licentiate examination. The Board decides whether, is necessary to change the theme of the thesis.

5.23. The insufficient grade (1-4) got for the thesis does not deprive the student of the right to take the computer assisted examination stage.

## **VI. FINAL PROVISIONS**

6.1. This Regulation enters into force on the date of its approval by the University Senate.

6.2. All subsequent amendments and additions to this Regulation enter into force upon their approval by the University Senate.

6.3. The Deans of Faculties have the obligation to make public the Regulation on the defense of the licentiate thesis/ graduation paper on the faculty webpage.

Signed by:

First Vice rector,  
vice-rector for academic issues

Olga Cernetchi

Vice-rector for Research

Stanislav Groppa

Head Didactic and Academic  
Management Department

Silvia Stratulat

Head of Academic  
Management Quality Unit

Virginia Salaru

Dean of Faculty of Medicine no 1

Gheorghe Placinta

Dean of Faculty of Medicine no 2

Mircea Betiu

Dean of Faculty of Pharmacy

Nicolae Ciobanu

Dean of Faculty of Dentistry

Oleg Solomon



*Annex 1. Title page*

**Ministry of Health of the Republic of Moldova**  
(font 14, Bold, Centered)

**Nicolae Testemitanu State University of Medicine and Pharmacy**  
(font 14, Bold, Centered)

**FACULTY NAME**  
(font 14, Bold, Centered, Uppercase)

**Department/Chair of NAME**  
(font 16, Bold, Centered)

Licentiate thesis/graduation paper  
(font 15)

**THEME OF THE THESIS IN CAPITAL LETTERS** (font 18,  
Bold, Centered)

**SURNAME, first name of the student** (font 14, Bold, Centered)

*III/ IV/V/VI, Years \_\_, group \_\_*  
*Study program 0910.1 Public health/ 0913.1 General medical assistance/ 0914.2*  
*Technologies in Radiology and Imaging/ 0914.4 Optometry/ 0915.1 Physiotherapy*  
*and Rehabilitation/ 0911.1 Somatology/ 0912.1 Medicine/ 0910.1 Preventive*  
*medicine/ 0916.1 Pharmacy*

**Scientific advisor:**  
**Surname and name of the scientific advisor(s)** (font 14, Bold)  
*Scientific degree, didactic degree* (font 14, Bold, Italic)

Chisinau, year

## DECLARATION

I, *Name, Surname*, hereby declare on my own responsibility that the licentiate thesis/ graduation paper entitled "*The Complete Title of the License Thesis*" is developed by myself, the materials presented are the results of my own research, was not generated in whole or in part by the use of applications or tools based on artificial intelligence, are not plagiarized from other scientific papers and have not been presented at another faculty or higher education institution in the country or abroad.

I confirm that all sources used, including those from the online environment, are mentioned in the bibliography and that:

- ✓ all fragments reproduced verbatim, even those translated, are indicated in quotation marks (or marked accordingly) and accompanied by a reference to the original source.
- ✓ paraphrases/conceptualizations of other authors are followed by a reference to the original source.
- ✓ summaries of other authors' ideas include precise references to the source texts.
- ✓ methods and techniques taken from other works are accompanied by the appropriate references.

I understand that failure to comply with the above constitutes academic misconduct punishable under university regulations and applicable law.

Date \_\_\_\_\_

Graduate \_\_\_\_\_  
(Surname Name)

\_\_\_\_\_  
(Signature)

### Annex 3. Examples of bibliography presentation

The editing of the bibliography will be done in strict compliance with (letters type, order of quotes, punctuation marks) the following model:

- ✓ for **articles** the following things are mentioned: author's name, title of the article, magazine name, year of appearance, volume, first and last page.

**Example:**

1. Baranețchi I., Prisacari V. Factori de risc în infecțiile septico-purulente nosocomiale de profil traumatologie și ortopedie. Studiu descriptiv transversal. În: Moldovan Journal of Health Sciences. Revista de Științe ale Sănătății din Moldova. 2016, 2 (8), p.15-27. ISSN 2345-1467.
2. Casian D. A. Regarding an alternative treatment for varicose veins: ligation plus foam sclerotherapy. In: Dermatologic Surgery. 2012, 38(1), 146-147. ISSN 1524-4725. doi: 10.1111/j.1524-4725.2011.02212.x (**IF: 1,798**).
3. Chung DR, Zang WS, Kim SB et al. Treatment of herpetic B virus associated glomerulonephritis with recombinant human alpha-interferon. In: Am J Nephrol, 1997, 17:112-117.
4. Hotineanu V., Moraru V., Bujor P., Bujor S. Cholelithiasis – epidemiology, risk factors and etiopathogenic aspects: Up-to-Date. In: Jurnal de chirurgie, 2014, X, 2, p. 101-104. NSN 1584-9341.

- ✓ for **books** the following things are mentioned: authors' names, title of the book, publishing house, place of appearance, year of appearance, first and last page.

**Example:**

5. Ciobanu Gh. *Resuscitarea cardiorespiratorie și cerebrală*. Volumul 1. Serghienko-Ciobanu, L. (red. șt.). Chișinău. Nova-Imprim; 2014.
6. Popovici I, Lupuleasa D. Tehnologie farmaceutică, Ed. Polirom, Iasi, 2001.

- ✓ all the bibliographic sources included in the licentiate thesis must be in the final bibliographic list. For the sources downloaded from the internet, web page addresses will be noted. In the final bibliography, they must be at the end of the list:

**Example:**

7. Jones ET, Miles C. Computing networking. 2nd edition. Derby, Bugle Press; 2002. Disponibil la: <http://www.imperial.ac.uk/library/digitallibrary> [accesat la 10.06.2007].

**Note:** 1. Articles published online may not have the number of pages.

2. If some parts of the thesis were published or communicated during scientific events, the licentiate thesis/ graduation paper will incorporate a copy of the abstracts or scientific articles from the original documents (magazine, abstract book). These articles will be mandatorily cited in the Bibliography.
3. Indexed articles, academic books, official guides, and recognized databases are accepted as scientific sources.
4. Collaborative online encyclopedias and websites without scientific authority (Wikipedia, non-academic blogs) are not accepted as primary sources.

*Annex 4. Examples of writing chapters, tables, formulas and figures*

**Example of chapter writing**

**2. CHAPTER TITLE (BOLD CAPS, font 14, centered)**

**2.1. Subchapter title (Bold, font 13)**

**2.1.1. Subpoint title (Bold, font 13, bold)**

In the contents of the subchapter or subpoint, the text displayed will contain the results obtained and their description in the form of tables, figures, ext.

**2.2. Subtitle title (Bold, font 13)**

**Example of tables**

Table 7. Changes in the activity of ALT, AST, PCE and albumin and total serum protein levels in animals with ethylene glycol-induced toxic hepatopathy

Seric indices	Animals cohort	
	Control group	HT
ALT, UI/g prot	0,426 ± 0,02, 100%	0,468 ± 0,03, 110%
AST, UI/g prot	0,226 ± 0,01, 100%	0,236 ± 0,02, 105%
PCE, nmol/s.g prot	681,0 ± 0,04, 100%	547,8 ± 0,04*, 80%
Total protein, g/L	36,49 ± 0,80, 100%	31,03 ± 0,34***, 85%
Albumin, g/L	38,74 ± 1,78, 100%	11,56 ± 0,35***, 30%

**Note:** ALT – alanine aminotransferase; AST – aspartate aminotransferase; PCE – pseudocolinesterase; HT – hepatic toxicity induced by ethylene glycol.

The veracity of the differences compared to the control group: \*–  $p < 0,05$ ; \*\*–  $p < 0,01$ ; \*\*\*–  $p < 0,001$ .

**Examples of formula**

$$n = t^2 \times p(1-p) / \Delta^2 \quad (4)$$





Example of figure

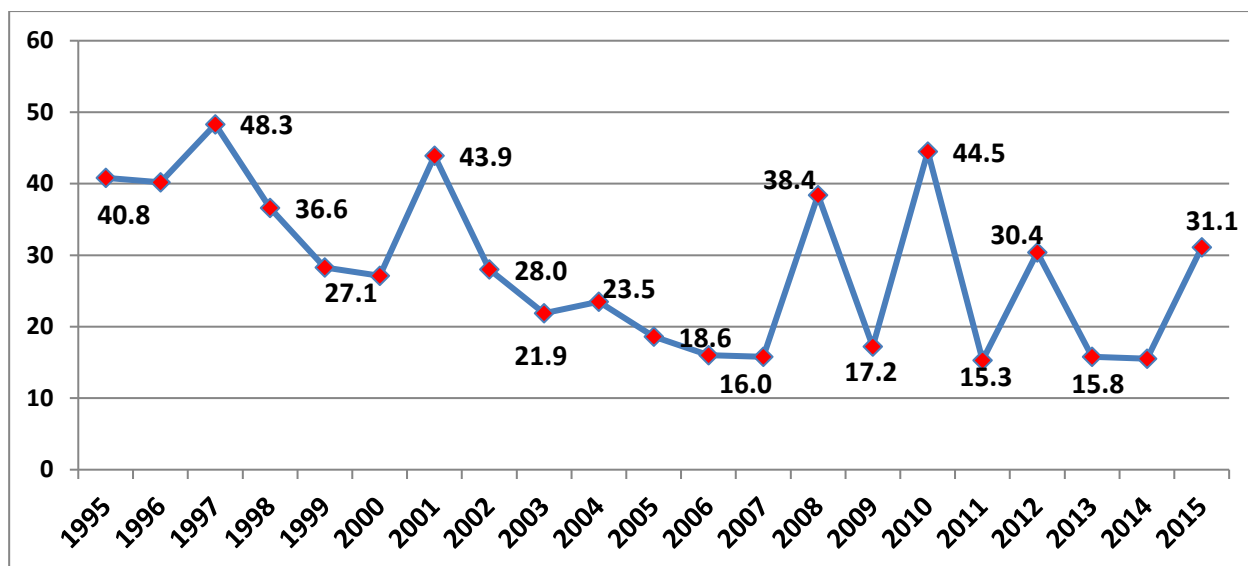


Figure 21. Maternal mortality rate per 100,000 live births in 1995-2015 [Bibliographic reference number (as applicable)].



Annex 5

**THE ASSESSMENT SHEET OF THE LICENTIATE THESIS/  
GRADUATION PAPER  
DONE BY THE MEMBERS OF THE ASSESSMENT BOARD**

Assessment of the thesis with the theme: \_\_\_\_\_

Developed by the student \_\_\_\_\_ group \_\_\_\_\_

**Criteria for the licentiate thesis assessment:**

**1. The quality of the drafting of the thesis and the respecting of the structuring rules:**

*0,5-2,0 points*

*Points:*

**2. Assessment of the quality of the research:**

*0,5-2,5 points*

*Points:*

**3. Bibliography quality:**

*0,1-0,5 points*

*Points:*

**4. The quality of oral presentation and answers to questions put by the Board:**

*0,5-4,0 points*

*Points:*

**5. Aspects of the work have been published and/ or presented at scientific forums:**

*(if proof is presented in the annex to the thesis)*

*0,5, 1,0 points*

*Points:*

**Grade** at the stage of assessment by the Assessment Board:

**Board member** \_\_\_\_\_

*S.N.,*

\_\_\_\_\_  
*scientific or/ and didactic degree*

Date: \_\_\_\_\_

\_\_\_\_\_  
*Signature*

**CRITERIA FOR THE FINAL ASSESSMENT OF LICENTIATE THESES/  
GRADUATION PAPERS**

<b>1. The quality of writing the licentiate thesis and compliance with the structuring rules</b>				
<b>0</b>	<b>0,1 – 0,5</b>	<b>1,0 – 1,4</b>	<b>1,5 – 1,9</b>	<b>2,0</b>
The thesis does not correspond to the provisions of chapters III and IV of this Regulation.	The writing of the research has major structural, linguistic or stylistic shortcomings. Significant deviations from the provisions of Chapters III and IV of this Regulation.	The research is satisfactorily drafted, but there are some shortcomings. Frequent but minor deviations or some moderate deviations from the provisions of Chapters III and IV of this Regulation.	The research is clear and coherently written, but there are minor shortcomings. Minor and single deviations from the provisions of Chapters III and IV of this Regulation.	The research is clear and coherently written. No deviations from the provisions of Chapters III and IV of this Regulation are found.
<b>2. Assessment of the quality of the research carried out</b>				
<b>0,5</b>	<b>1,0</b>	<b>1,5</b>	<b>2,0</b>	<b>2,5</b>
The purpose of the paper and not the research framework is not clearly defined. The description and argumentation of the choice of approaches, methods, procedures, techniques used is missing or is brief. The analysis demonstrates the lack or poor mastery of the chosen methods. The conclusions do not reflect the essence of the results obtained, are not consistent with the objectives of the introduction and do not reflect the opinions and personal contribution in the study and elucidation of the problem addressed.	The purpose of the paper is not sufficiently clearly defined, and the objectives correspond only partially to the purpose of the paper. The research framework is satisfactorily presented. The description and argumentation of the choice of approaches, methods, procedures, techniques used is inadequate. The analysis demonstrates mastery of the chosen methods, but it is not entirely systematic and has some errors in accuracy. The conclusions only partially reflect the essence of the results obtained, are only partially consistent with the objectives of the introduction and do not reflect the opinions and personal contribution in the study and elucidation of the problem addressed.	The purpose of the paper is mostly clearly defined, but some objectives do not correspond to the purpose of the paper. The research framework is quite logical. The description and argumentation of the choice of approaches, methods, procedures, techniques used is mostly appropriate. The analysis demonstrates a good mastery of the chosen methods, being accurate and reliable. The conclusions largely reflect the essence of the results obtained, but some are not consistent with the objectives in the introduction; the conclusions only partially reflect the opinions and personal contribution in the study and elucidation of the approached problem.	The purpose of the paper is clearly defined, the objectives correspond to the purpose of the paper. The research framework is logical. The approaches, methods, procedures, techniques used are well described, and the argument for their selection is convincing. The analysis demonstrates a very good mastery of the chosen methods, being systematic, accurate and reliable. The conclusions reflect the essence of the results obtained, are consistent with the objectives of the introduction; the conclusions reflect the opinions and personal contribution in the study and elucidation of the approached problem.	The purpose of the paper is clearly defined, the objectives correspond to the purpose of the paper. The research framework indicates <b>creative thinking</b> . The description and argumentation of the choice of approaches, methods, procedures, techniques used is adequate and exhaustive. The analysis demonstrates an <b>excellent</b> mastery of the chosen methods and is creative, systematic, accurate and reliable. The conclusions reflect the essence of the results obtained, are consistent with the objectives of the introduction; the conclusions reflect the opinions and personal contribution in the study and elucidation of the approached problem.

3. Quality of the bibliography				
0,1	0,2	0,3	0,4	0,5
Significant errors in the application of bibliographic standards, elements of plagiarism	The number of bibliographic sources does not correspond to the provisions of this Regulation and/ or incorrect citation, or non-academic bibliographic sources, frequent errors in the application of bibliographic standards.	Adequate number of bibliographic sources, but with a ratio of less than 80% of sources in the last 10 years, errors in compliance with the citation, some bibliographic sources do not correspond to academic standards, uneven application of bibliographic standards	Adequate number of bibliographic sources, with a ratio of more than 80% of sources in the last 10 years, small errors in compliance with the citation, bibliographic sources correspond to academic standards, correct application of bibliographic standards.	Sufficient number of bibliographic sources, correct citation, sources that correspond to academic rigor and evidence-based medicine, correct application of bibliographic standards.
4. Quality of oral presentation and answers to questions put by the Board				
Exposure quality and information presentation logic	0,1-0,4	0,5-0,9	1	
	Lack of presentation logic or information relevant to the allotted time, presentation read.	A good presentation order, but some information is outside the presentation logic. Reading of small parts of the material.	The information presented is complete and presented logically and in a scientific language. It's easy to follow. The student uses little or no notes.	
Framing in the allotted time  Note: Delays due to technical problems will not be taken into account.	0,1-0,4	0,5-0,9	1	
	Significant exceeding of the presentation time,> 5 minutes and or stopping the presentation by the members of the Assessment Board.	Insignificant exceeding of presentation time, 1-5 minutes.	Very good time planning. Framing in time for presentation	
The quality of the slides and their presentation	0,1-0,4	0,5-0,9	1	
	Poor quality of the slides/ materials presented. Significant deviations from the academic rigors are present, some figures and/ or tables are incorrectly elaborated or do not correspond to the presented results.	Moderate quality of the slides/ materials presented. The graphic presentation of the paper corresponds partially to the academic rigors, the figures and tables are correctly elaborated and are in correspondence with the presented results.	Good quality of the slides/ materials presented. The graphic presentation of the paper corresponds to the academic rigors, the figures and tables are correctly elaborated and are in accordance with the presented results.	
Quality of answers	0,1-0,4	0,5-0,9	1	
	Lack of answers, or erroneous answers to most of the questions asked. The answers are not based on the results of the study. The student demonstrates a poor knowledge of the material.	Adequate answers to most of the questions asked. Few inaccuracies or omissions. The answers are partly based on the results of the study.	Adequate answers to all questions asked, critical and analytical thinking. The answers are based on the results of the study.	
Total	0,4-1,6	2,0-3,6	4	
5. Aspects of the thesis have been published and/ or presented at scientific forums				
0	0,5	1,0		
There is no evidence of presenting the results of the thesis at scientific forums.	The thesis presents the proof of <b>acceptance of the material for publication</b> , only the submission of the abstract is <b>NOT</b> considered.	Proof of publication of aspects of the thesis is presented in the form of an annex to the thesis (copy of the article/ thesis from the journal/ collection), or the proof of presentation of the oral or poster report at Congresses or Conferences(certificate/program).		

*Annex 7*

**THE ASSESSMENT SHEET OF THE LICENTIATE THESIS  
DONE BY THE MEMBERS OF THE ASSESSMENT BOARD**

Assessment of the thesis with the theme: \_\_\_\_\_

Developed by the student \_\_\_\_\_ group \_\_\_\_\_

Criterion	Points	Board members								AVERAGE
		Name, Surname	Name, Surname	Name, Surname	Name, Surname	Name, Surname	Name, Surname	Name, Surname	Name, Surname	
The quality of the drafting of the thesis and the respecting of the structuring rules	0-2,0									X
Assessment of the quality of the research	0,5-2,5									X
Bibliography quality	0,1-0,5									X
The quality of oral presentation and answers to questions put by the Board	0,4-4,0									X
Aspects of the work have been published and/ or presented at scientific forums:	0-1,0									X
<b>Mark of the board member/ average</b>										

**The Head of the Board,  
Name, Surname, scientific  
and scientific-didactic title**

\_\_\_\_\_  
*Signature*

**The Secretary of the Board,  
Name, Surname, scientific  
and scientific-didactic title**

\_\_\_\_\_  
*Signature*

*Date*